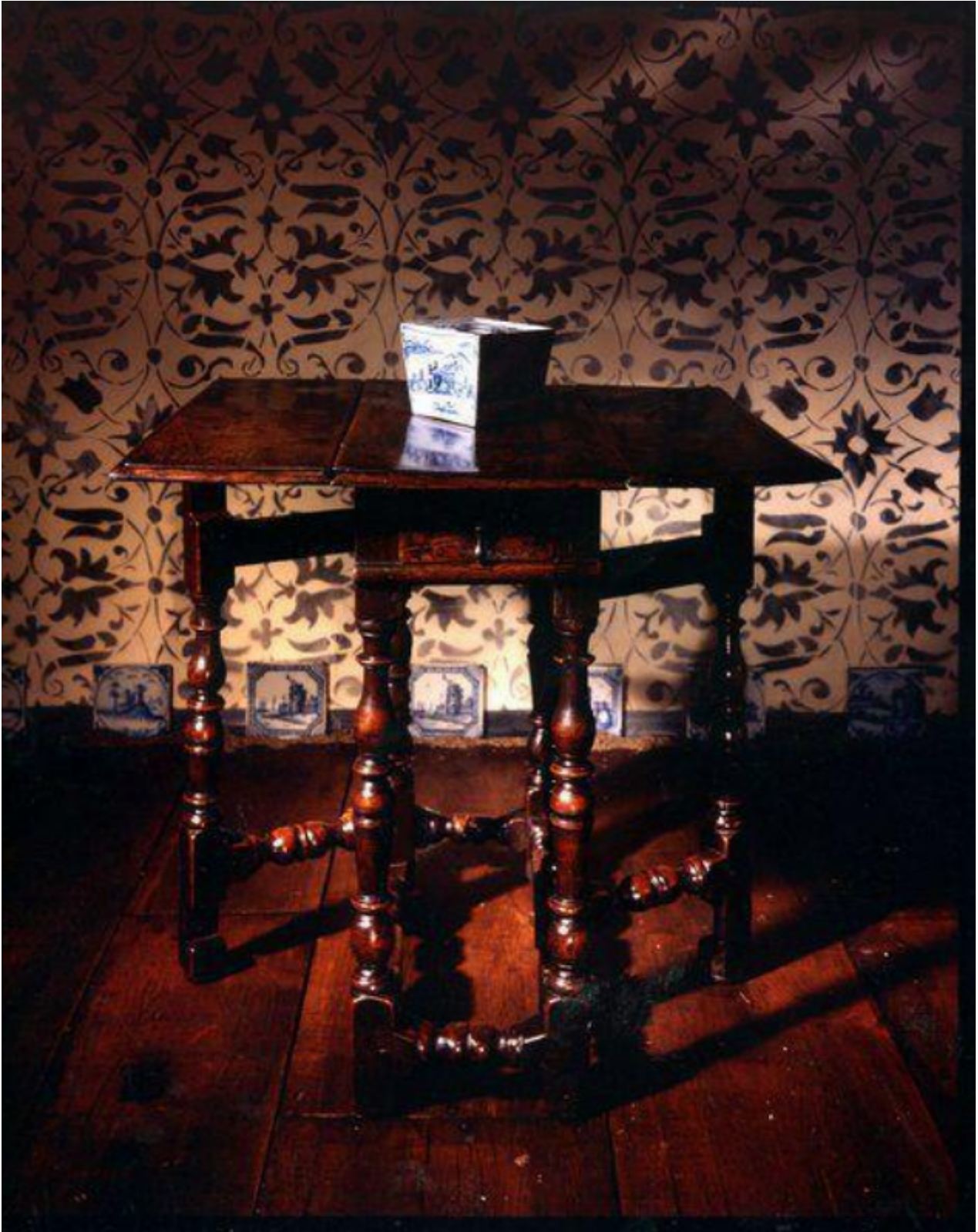


An important, late-17th century, walnut, gateleg table

Sold



REF: 10382

Height: 28 cm (11")

Width: 66 cm (26")

Depth: 30 cm (11.8")

## Description

The rectangular, plank top in three sections with a repair to the top and also to losses in the moulded edge. Two hinges replaced. The plain frieze with a single drawer, with a single bead moulding, and a replaced, period handle. Standing on baluster and ball-turned legs, joined by both ball and fillet turned stretchers. The drawer lined in oak.

Excellent configuration original colour and patina, retaining traces of a painted finish. English, fourth quarter of the 17th century. 50381072.

This is an exceptional example of its form. The overall proportion of the table is strong and elegant, with the square top balanced and supported by the shapely, turnings which flow into the feet. Although tables of this size must have been made in large quantities during the late-17th century, they were heavily used and moved around the home, and consequently few survive today. The colour and patina have matured to an exceptional quality which is, sadly, hard to find today.