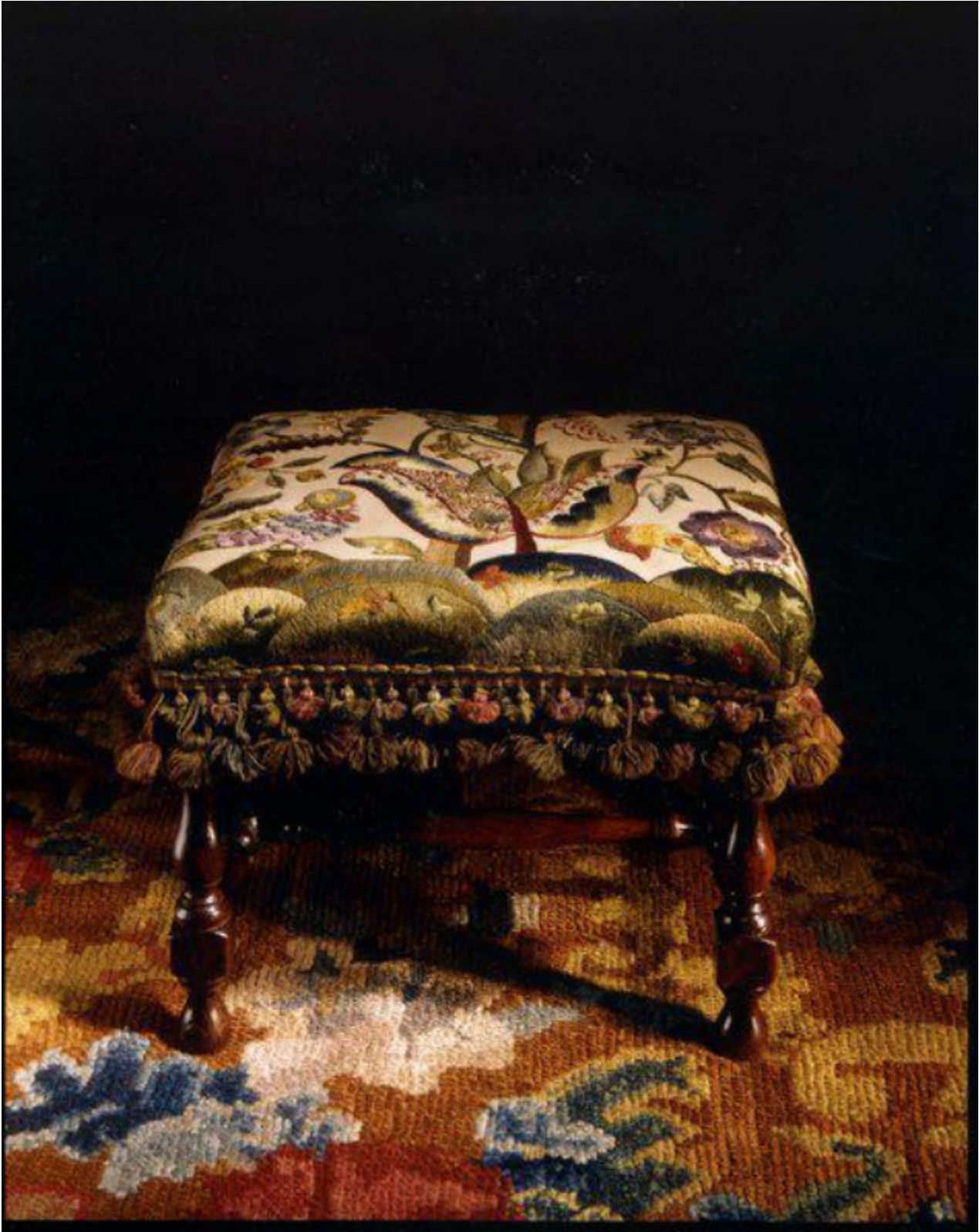


A good, early-18th century, walnut stool

Sold



REF: 10483

Description

The rectangular seat re-upholstered in an early-19th century crewelwork fragment, decorated with flowers and trailing stems, and trimmed with braid and fringe. Standing on baluster turned legs on toes, joined by a central, baluster, turned stretcher. Excellent original colour and patina.

English, first quarter of the 18th century.