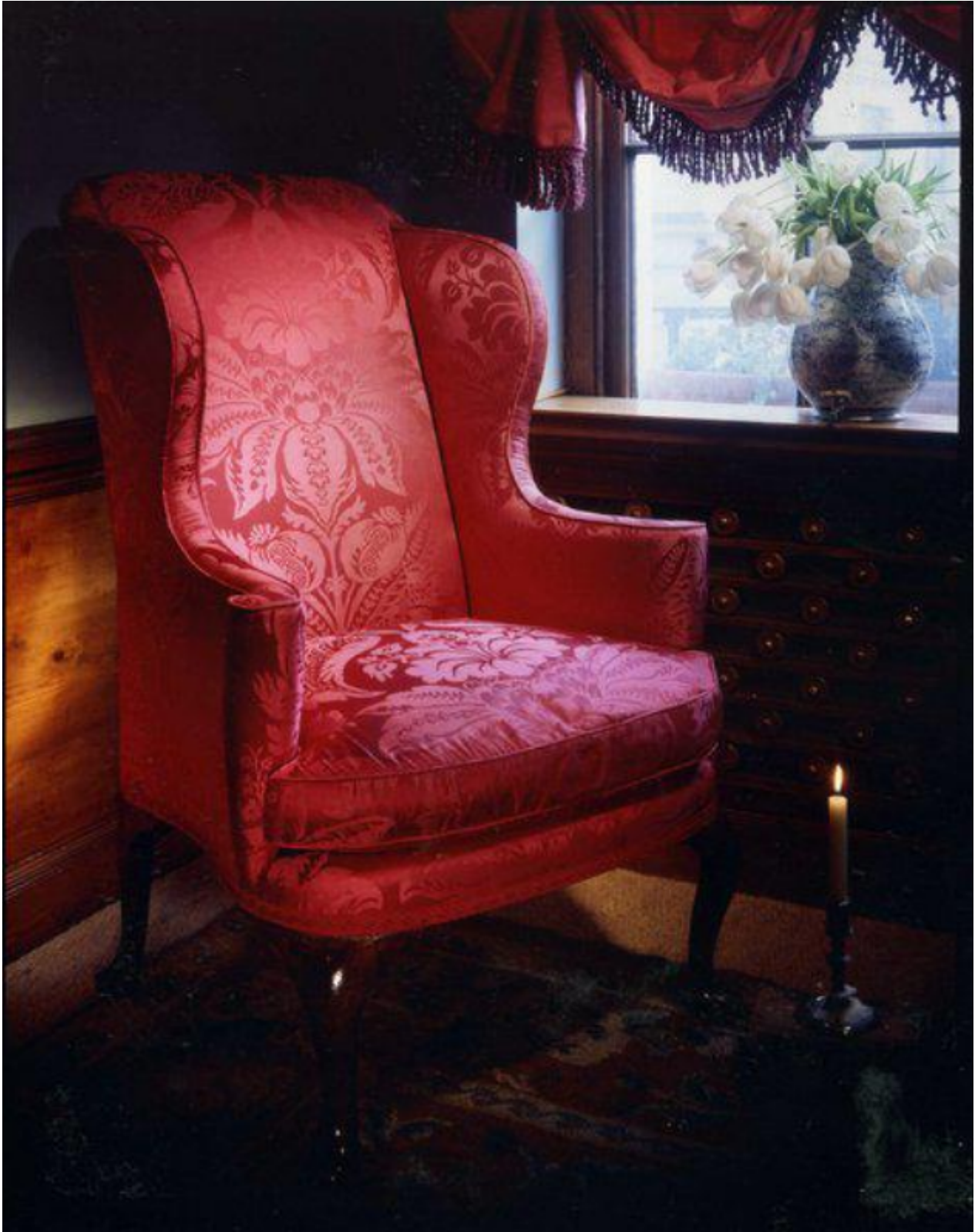


A good, early-18th century, walnut wing armchair

Sold



## Description

The oak and walnut frame in original condition (see photographs of frame). The back with an arched crest, and flanked by ogival wings and conical out-scrolled arms centering a loose-cushioned seat. Re-upholstered in a hand-woven, redrawn, crimson, silk damask. Standing on cabriole legs, with a good rake of the back, ending in pad feet. Excellent original colour and patina. English, first quarter of the 18th century.

This chair has a petite proportion, with elegant, sweeping wings. The cabriole front legs and back legs are well drawn, and the natural colour and patina has matured to an excellent depth over time. Given their utilitarian use, surviving early-18th century wing armchairs in original condition are rare. During the Queen Anne period, wing armchairs tend towards uniformity of design, the wings being prolonged in padded arm-rests with an outward scroll. The new styles became naturalised, and traces of foreign influence are less noticeable. The curved line dominates the design while sound construction, elegance and utility are united in the best chairs of this time.

The height of the chair-back was considerably reduced, and in the pattern of the legs the cabriole is often found in a rudimentary form.