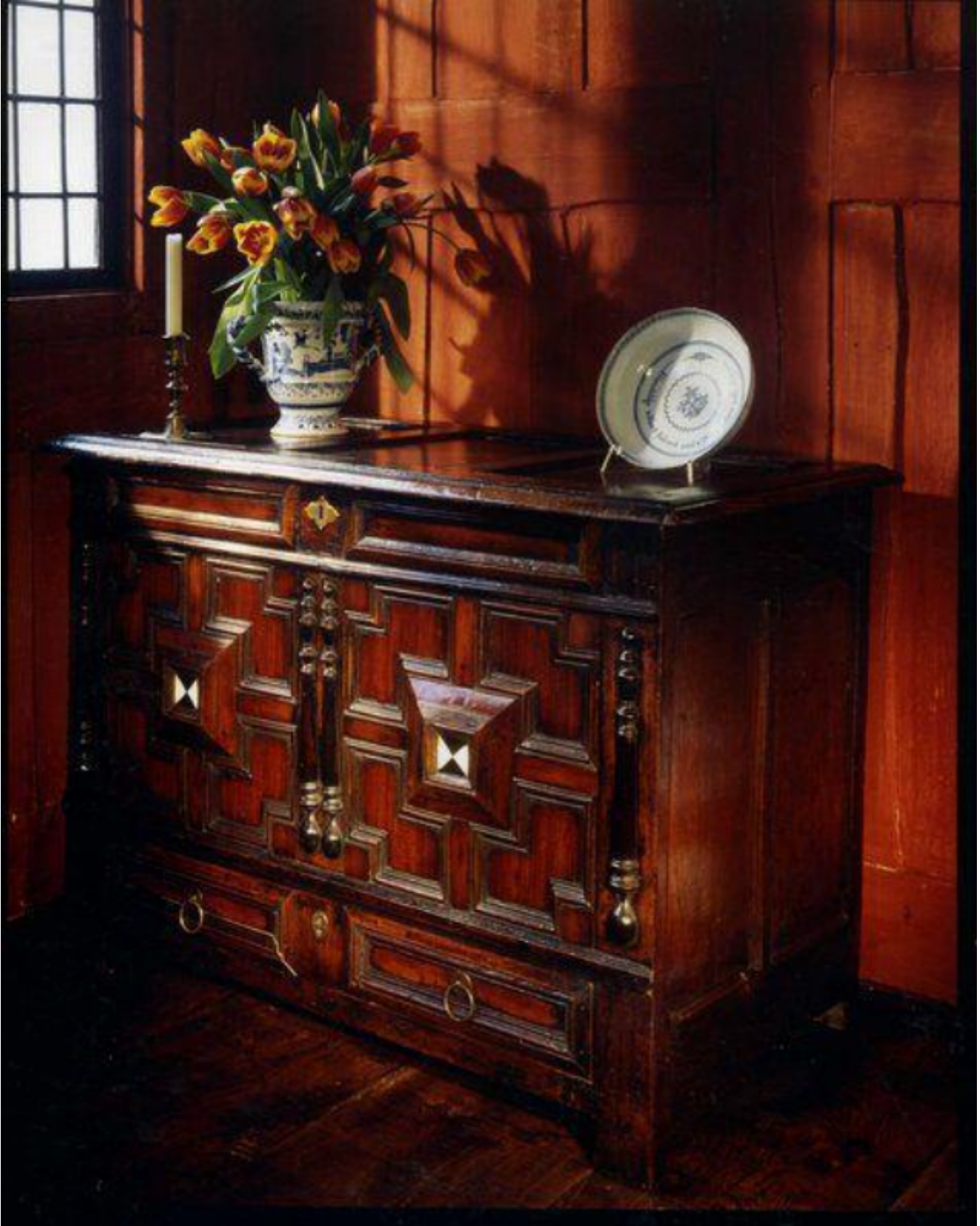


A rare, mid-17th century chest with snake wood, yew, ebony and ivory inlays

Sold



## Description

Plank top with three inset panels and moulded edge. Interior with candle box, later hinges and lock. The frieze with replaced escutcheon, and two moulded panels containing yew inlay. The front with two deep geometrically moulded panels containing snake wood, yew, ebony and ivory inlays with three stained beech split-balusters. The drawer with two moulded panels with yew inlays, lock removed and replaced escutcheon and handles. Bottom moulding removed. Excellent original colour and patination. English, circa 1660. 3075611.

Width : 108 cm./42.50 in.

Height: 78 cm./30.75 in.

Depth : 61 cm./24.00 in.

A number of geometrically panelled and bone inlaid chests were made around the date of Charles II's return. They tend to exhibit similar characteristics, the structure being made from oak, with polygonal panels elaborately mitred and the centres boldly projected.