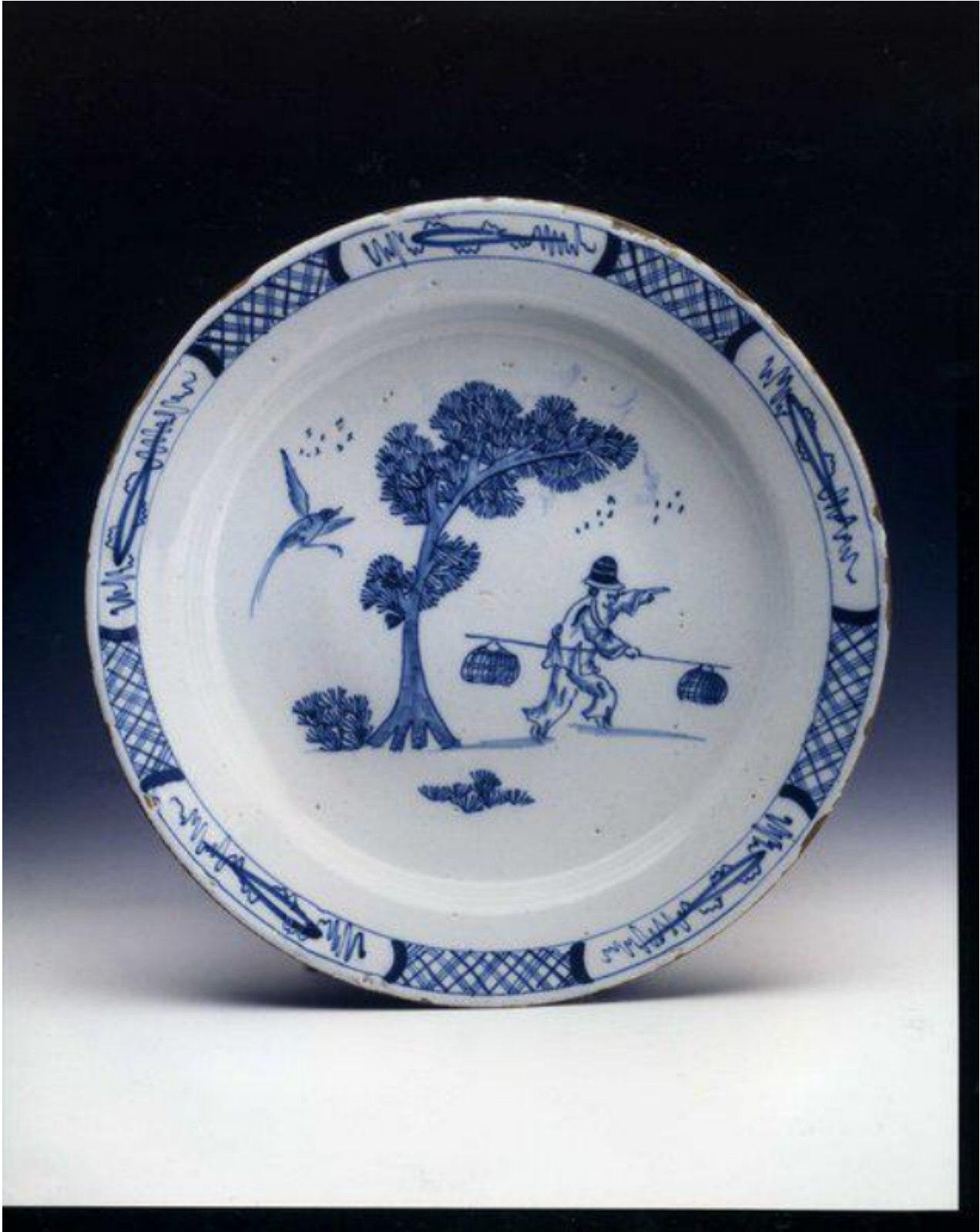


A mid-18th century, English, delftware, Birdman, dish

Sold



REF: 10559

## Description

Painted with a chinoiserie landscape scene of a birdman walking past a tree and pointing ahead while, carrying two baskets each balanced either end of a long pole. The rim with six repeats of artemisia leaf symbols with trellis diaper interposed. The underside well marked with a foliate trefoil, and the under-rim with four herbal sprigs. Painted in blue and white on a blue glaze. In original condition. Probably Bristol, second quarter of the 18th century.

Diameter : 29.20 cm./11.50 in.

REFERENCE: SHARD NO.59 FROM AN UNPUBLISHED MONOGRAPH 'POTTERY KILN WASTE FROM TEMPLE BACK, BRISTOL', BY ROGER PRICE.

DIAMETER : 33.00 CM./13.00 IN.