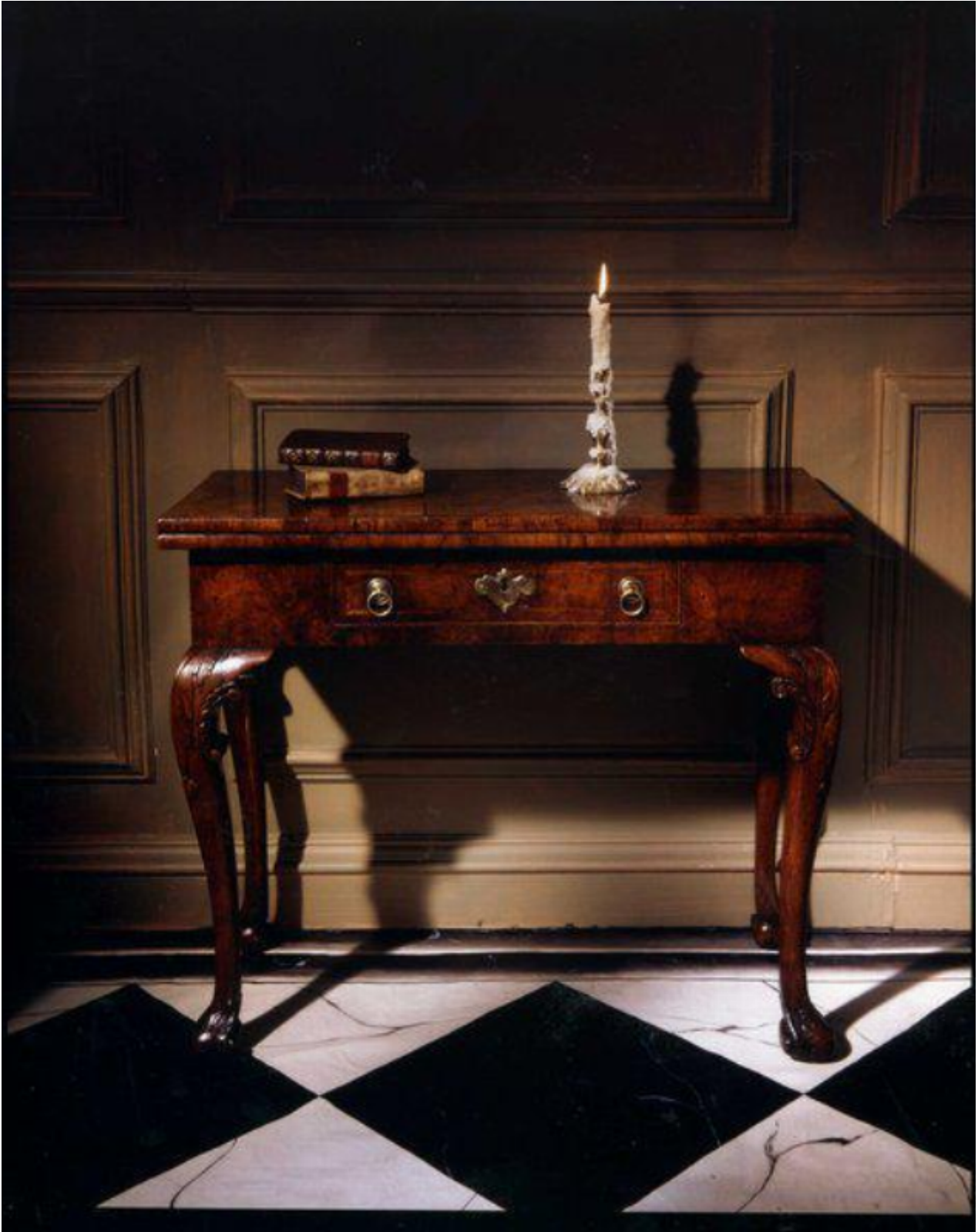


A rare, mid-18th century, walnut-veneered card table

Sold



REF: 10506

Height: 71 cm (28")

Width: 84 cm (33.1")

Depth: 39 cm (15.4")

Description

The fold-over, plank top veneered in four sections with a crossbanded and herringbone border. The top flap supported by a swing, gateleg, hinged to the back framework. The interior revealing original hinges, corner wells and replaced baize. The frieze with a single drawer with a crossbanded and herringbone border and faced with a cockbead moulding. Original lock, escutcheon and replaced handles. The knees carved with anthacus leaves with a frilled 'c' scroll on either side and one leg with a small patch. The braganza-shaped feet, carved with anthacus leaves back and front, with some repairs. The carcass oak and pine with some renewed glue blocks. Excellent colour and patina. English, second quarter of the 18th century. 50581091.