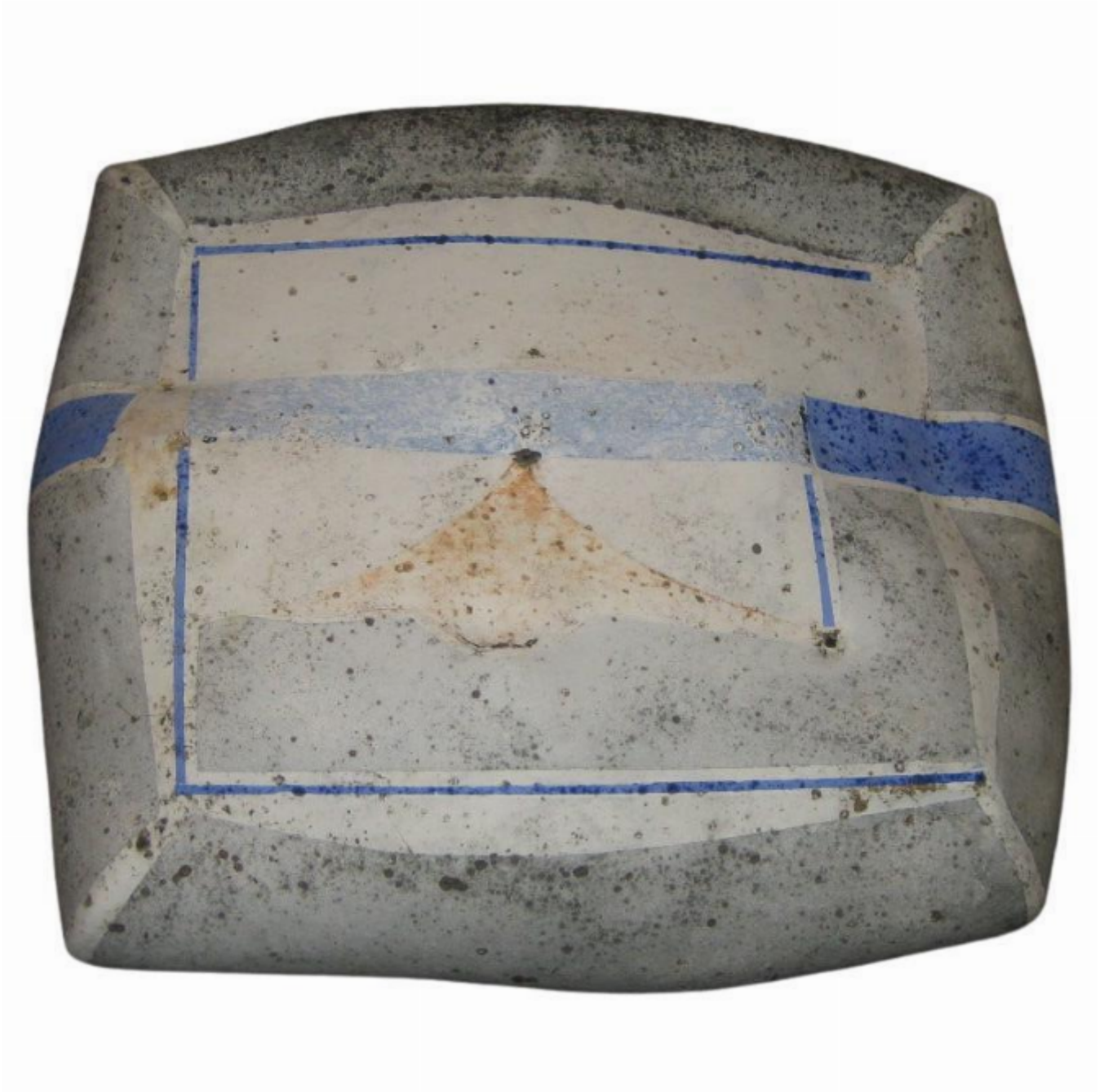


Sculptural Pillow Pottery Regina Heinz Landscape Blue Red-oxide
White Grey

Regina Heinz

£2,700



REF: 11252

Height: 35 cm (13.8")

Width: 30 cm (11.8")

Depth: 11 cm (4.3")

Description

Regina Heinz B. 1957 SCENIC VIEW I 1999

Regina's award winning work has been purchased by the National Art Collector's Fund and is presented in collections worldwide, including the Fitzwilliam Museum in Cambridge, the Museum of Contemporary Ceramics in Gifu, Japan, the International Ceramics Museum in Faenza, and the Yingge County Ceramics Museum in Taipei.

With degrees in painting from the Academy of Fine Arts in Vienna and in ceramics from Goldsmiths' College, London, Regina combines in her work the sensibility of a fine artist with outstanding expertise in ceramics.

As an artist, Regina draws on her love for her native countryside and her background as a painter. Her passion for colour, form and beautiful ceramic surfaces led her to set up her architectural ceramics practice in 2011 to explore the integration of art, architecture and landscape.

Regina regularly works with international interior designers, art consultants and private clients world-wide. Her portfolio includes an exclusive 3D tile line for the American tile retailer Ann Sacks, commissions for residential developments in London and Saudi Arabia and a series of sculptural wall pieces for 2000 cabins of P&O's newest cruise ship Britannia, launched in 2015.

Provenance: Private Collection Artist Regina Heinz.