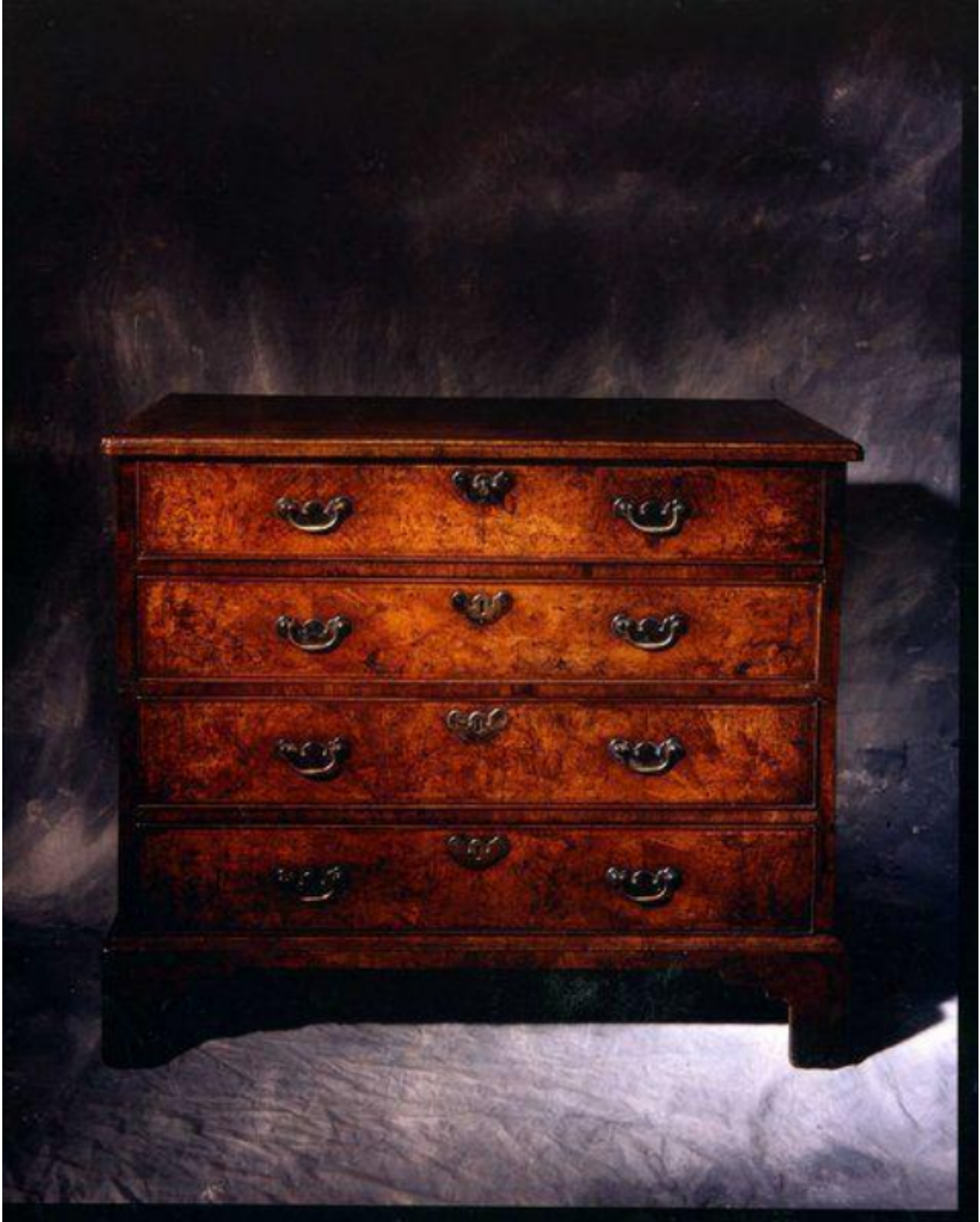


A rare, early-18th century, walnut-veneered, secretaire, chest of drawers.

Sold



REF: 10370

Height: 79 cm (31.1")

Width: 94 cm (37")

Depth: 51 cm (20.1")

## Description

The top decorated with burr, quarter-veneers, an inlaid herringbone and crossbanded border, and the front with re-entrant corners. The frieze with four drawers decorated with burr-veneers and an inlaid herringbone border and faced with cockbead mouldings with minor repairs. The top drawer fitted with a brushing slide and two compartments. The drawers retaining their original handles and escutcheons, and the top drawer with original lock, the others replaced. The sides with straight-grain half-veneers. Standing on bracket feet, probably with later veneers. Exceptional colour and patina. English, first quarter of the 18th century. 60781096.