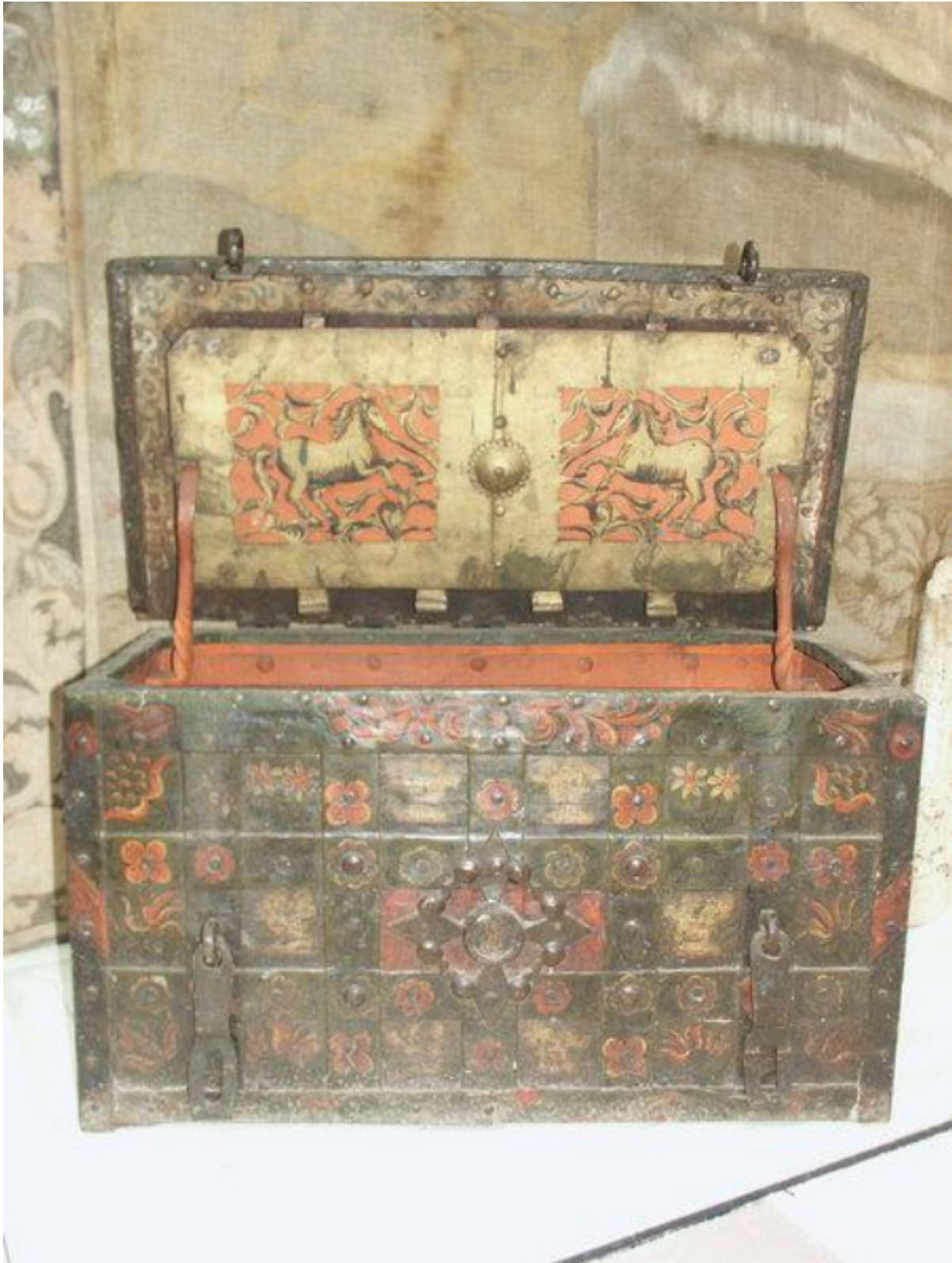


A fine, early-17th century, painted strong box retaining its original paintwork

Sold



REF: 10308

Height: 52 cm (20.5")

Width: 96 cm (37.8")

Depth: 50 cm (19.7")

Description

The top with eighteen, panels reinforced with strap work, and bolts. The central rectangular key plate released by a spring mechanism on one bolt, revealing the keyhole. The replaced key operating a mechanism on the interior of the lid throwing nine bolts. Protected by a gilded, inner lock plate decorated with cut-out, painted, galloping horses and foliage. The hinges original. The underside of the top painted with acanthus leaves. The interior painted red, and with a candle box with original, working lock. The front with eighteen, panels reinforced with strap work and bolts. Twin hasp fittings. The false escutcheon headed by the mask on the interior lock plate. The sides with nine, panels reinforced with strap work and bolts and original carrying handles. Retaining original painted vignettes of landscape scenes and floral sprays on a green ground. Probably German, 1st quarter of the 17th century.

91111315 sold june 2003